

THE OFFICE OF JAMES BURNETT

American Society of Landscape Architects

2015 Firm Award Submittal



FIRM HISTORY

OVERVIEW

The Office of James Burnett focuses on creating landscapes that transform perspectives and evoke emotional responses, creating unique and unforgettable sensory experiences. The firm creates projects that unify the relationship between landscape and architecture in imaginative ways, ensuring unique compositions that satisfy the demands of both form and function.

OJB's design process conceives original and inventive landscapes within the framework of context and function. This process mitigates site challenges with creative and innovative solutions. The firm is committed to an inclusive, exploratory process that engages and inspires project stakeholders and collaborators. OJB's multi-disciplinary approach has sustained the relevance of the firm over its 26-year history as it continues to challenge the conventional boundaries of landscape architecture.

HISTORY

Jim Burnett originally aspired to be an architect, but under the mentorship of Dr. Robert Reich at LSU's Environmental Design School, Jim quickly discovered a passion for landscape architecture. While at LSU, Jim was inspired by the landscapes of Dan Kiley who was making bold statements in the field with very beautiful yet simple landscapes. Jim had the opportunity to work with Peter Walker early in his career and was deeply influenced by Walker's use of landscape architecture as a means for artistic expression. Jim was also captivated with the growing influence of modernism in the fields of architecture and landscape architecture, as is consistently reflected throughout his work. Jim's modernist landscapes often integrate a "controlled" landscape -- each element carefully considered and placed intentionally in precise geometric forms.

Jim founded the Office of James Burnett in 1989 in Houston, Texas with one part-time employee. While modest, the firm's early projects were thoughtful and composed, quickly establishing OJB as a leader in the field of landscape architecture. By 2003, OJB had 14 employees and opened a second office in San Diego, CA. The new location expanded OJB's reach to the west coast and the firm quickly grew to more than 30 employees. In 2013, OJB opened its Boston office and currently employs 45 professionals throughout the firm. While OJB operates in three geographic locations, the firm is unique in that team members collaborate closely on projects across the country, making it essentially one office with a really long hallway.

While OJB has always considered itself a "design first" firm and is laser focused on the creative process, the firm also understands the importance of having a solid business model to recruit and retain the best and brightest talent for the firm. The firm employs a comprehensive performance planning and review process designed to align individual objectives with the vision and goals of the firm. Additionally, OJB encourages all team members to be "good citizens" by giving back to the profession and the community. The firm supports this through charitable giving and undertaking projects that impact the less fortunate in their communities. These initiatives have driven employee engagement and have helped team members become heavily invested in the design process and success of each project.

EVOLUTION OF THE FIRM

Inspired by a personal health crisis early in his career, Jim directed the Firm's initial focus towards transforming healthcare design. Through his personal experience on medical campuses and examination of patient encounters with their institutional surroundings, Jim found that the



Klyde Warren Park, Dallas, TX



Sunnylands Center and Gardens

austere environments fostered a focus on “illness” instead of “wellness.” The firm’s innovative approach to healthcare design allows patients and their families to experience the beauty of nature through serene courtyards, beautiful campus walks and fountains that engage all of the senses and provide respite from an otherwise cold institutional environment. OJB’s altered perspective on healing, restorative design became sought after in the mid 1990s and has been widely published since.

OJB’s grasp of the importance of landscape design within the academic environment makes it one of the leading designers of academic campuses in the United States. Students often make their decision to attend a university based on their experience traveling through the campus and, unlike buildings, landscapes are dynamic, living systems that evolve to reflect the changing needs of the institution. OJB’s campus landscapes organize the space between buildings in a cohesive manner and connect existing or older buildings with newer facilities by preserving and incorporating both mature landscape and new planting elements. One of the most valuable aspects of campus life is informal discussion and debate outside of the classroom and OJB’s campus landscapes provide a forum for those discussions. The firm creates flexible outdoor spaces designed for socializing and studying with moveable furniture and subtle buffering between high traffic areas and quieter outdoor spaces. The Brochstein Pavilion at Rice University in Houston, Texas is just one example of OJB’s strong understanding of academic campus design.

The firm has evolved its corporate campus design to meet the growing demands of corporate culture to promote work/life balance and foster creativity and collaboration while balancing practical and budgetary constraints.

OJB’s corporate design initiatives first focus on understanding the client’s business, their challenges and their desired workplace environment. The employee and visitor experience – from the moment they park their car to when they arrive in the office – is meticulously examined and considered. Outdoor meeting spaces are designed for both individual rejuvenation and innovation and group collaboration. Site issues are identified and mitigated, often resulting in multiple on-structure landscape designs, including complex roof gardens and interior courtyards. Integrating these spaces seamlessly into the work environment without being disruptive or distracting requires creativity and a strong grasp of context.



Brochstein Pavilion at Rice University, Houston, TX

The firm’s recent work has focused on the aesthetic and economic transformation of American cities through the creation of fascinating and functional public spaces. OJB’s work in this area contemplates restoring connections between disparate sectors within cities, providing transitional space between residential, cultural and business districts, and drawing traffic and use through innovative programming initiatives. These projects revitalize communities and local economies, increasing property values and energizing urban redevelopment.

Additionally, OJB’s urban open space projects have significant environmental benefits, including stormwater runoff interception, carbon emission reduction, and air and noise pollution mitigation. The firm’s parks and public gardens have been extremely successful due to thoughtful programming initiatives. OJB has designed parks with restaurants, performance pavilions, great lawns, games areas, dog parks, native botanical gardens and pedestrian streetscapes. All of these elements ensure sustained use and foster vibrant urban communities. Designed with meticulous attention to detail and the needs of the urban community in mind, Klyde Warren Park in Dallas is the model for urban open space projects across the country.

The firm’s growth and evolution over the last 26 years has made it one of the most sought-after thought leaders on landscape design and urban planning in the country. OJB consistently demonstrates its commitment to excellence in landscape design and function, collaborating with clients and architects domestically and internationally.

FIRM ACHIEVEMENT

AWARDS & PUBLICATIONS

OJB has received more than 80 design awards, including the 2014 ULI Urban Open Space Award for Klyde Warren Park in Dallas, Texas, and three national ASLA awards for Sunnylands Center & Gardens in Rancho Mirage, CA, the Brochstein Pavilion at Rice University in Houston, TX, and Reid Residence in Houston, TX.

OJB's landscapes have been featured in publications such as Architectural Record, Landscape Architecture Magazine, Topos Magazine, the New York Times, LA Times, Washington Post and other national media.

CONTRIBUTION TO THE PROFESSION

One of OJB's major contributions to the field of landscape architecture was to expand the presence and influence of the profession in the Southwest region of the country. Many of OJB's highly visible projects are located in the Southwest and have heightened the discourse and expectations for what is possible in landscape architecture in the region and across the country.

OJB has also had a considerable impact in the design of urban and public spaces. OJB believes that landscape and open space are critical to rejuvenating and revitalizing cities and can stimulate economic development and urban growth. Cities are increasingly aware of the importance of providing the urban core with well programmed, beautiful open spaces to attract and retain residents and businesses. OJB's public park projects - including Lakeshore East in Chicago and Klyde Warren Park in Dallas raised the bar for urban open space design. In fact, the Landscape Architecture Foundation



The Park at Lakeshore East, Chicago, IL

selected Klyde Warren Park as the focus of its recent study on the economic and environmental impact of the park on the community.

The management team at OJB is committed to developing and mentoring the next generation of talented designers and they regularly speak at educational institutions and universities. OJB also has a successful internship program at all three of its offices and has hired many former interns as full time employees. The firm's management team regularly participates in industry conferences and events and the CEO Roundtable. The firm has been part of Education Sessions at ASLA for the past eight years. Jim Burnett has also served as ASLA's student and professional awards jury in 2012 and 2013, and in 2014 chaired this program. The firm is dedicated to advancing the discipline of landscape architecture and passionate about exploring the countless possibilities that the field provides.



Klyde Warren Park, Dallas, TX

FIRM LEADERSHIP



JAMES BURNETT, FASLA
President

Jim Burnett founded the Office of James Burnett in 1989 and has dedicated his career to creating meaningful spaces that challenge the conventional boundaries of landscape architecture. To date, OJB has garnered over eighty state and national design awards for projects consistently cited for innovative and iconoclastic redefinition of human interaction with the environment. Taking a multi-disciplinary approach to his practice, Jim often works closely with design teams of highly-regarded architects, planners, artists, and other professionals and a diverse range of clients. His commissions include academic, corporate, healthcare, institutional, mixed-use developments, and master planning. Throughout his work, there has been a particularly strong focus on designing landscapes that promote healthy living.



CHIP TRAGESER, ASLA
Principal, Houston, TX

Chip Trageser is a registered Landscape Architect with over twenty years of professional experience. He is currently responsible for various health care, academic campus and corporate campus projects. As Principal, he is responsible for design and operations for the Houston office. He was the Principal in Charge, responsible for CityCentre in Houston, Texas, The Park at Lakeshore East in Chicago, IL, Kaiser Permanente Medical Center in Santa Clara, California, and The Rice University Brochstein Pavilion. Chip has a Bachelor of Landscape Architecture from Louisiana State University and is an active member in the Houston design community. His talks on therapeutic landscapes and gardens with meaning have informed students and professionals alike.



MEG LEVY
Chief Operating Officer, Solana Beach

Meg oversees the general operations of the firm and guides the development and execution of the firm's strategic plan. Meg's primary focus is to ensure that the firm achieves its short- and long-term financial goals while honoring OJB's commitment to design excellence and passion for landscape architecture. Meg is dedicated to the growth and development of the team and hiring the best and the brightest talent for OJB. Meg was instrumental in establishing OJB's operational protocol, including the firm's key performance metrics, processes, reporting tools and employee performance planning. These initiatives were implemented over the last 12 years and have helped align and support the growth objectives of the firm.



2005 Chip Trageser, Jim Burnett, Kyle Fiddelke

FIRM LEADERSHIP



JERECK BOSS, ASLA
Principal, Houston, TX

Jereck is a licensed Landscape Architect with over twenty years of professional experience. His responsibilities include project design, development and management. Throughout his career he has worked on a variety of project types including corporate, academic and healthcare campuses, resorts and urban design projects. He recently completed BG Group Place, Asia Society Houston and the redevelopment for all of the streets and sidewalks for Oklahoma City's Downtown Business District in Oklahoma City, Oklahoma encompassing 180 acres. Currently he is working on the new State Farm Dallas HUB, Green Street and 609 Main in Houston.



NATHAN ELLIOTT, ASLA
Principal, Solana Beach, CA

Nathan Elliott is a Principal with the Office of James Burnett in Solana Beach, California and has led the design and management of urban parks, corporate headquarters, academic landscapes and mixed use projects across the United States. Originally drawn to landscape architecture by his love for plants, Nathan's role in the firm has evolved to reflect his passion and aptitude for public speaking, marketing and business development. Nathan enjoys the challenges faced by difficult sites, complex programs and challenging regulatory environments. Some of his notable projects include Klyde Warren Park in Dallas TX, Myriad Botanical Gardens in Oklahoma City OK, Hall Wines in St. Helena CA and Northwestern Mutual World Headquarters in Milwaukee WI. Nathan is currently designing LeBauer Park in Greensboro, NC.



KYLE FIDDELKE, ASLA
Principal, Solana Beach, CA

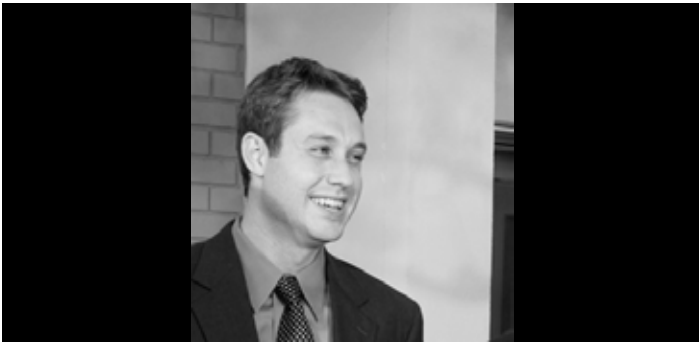
Kyle is a Landscape Architect with over seventeen years of professional experience. He is responsible for managing various large commercial, community, healthcare, and institutional projects. As Principal, his responsibilities include project management, design development, coordination of construction drawings, and construction administration. Some of these projects currently include Olive & McKinney Mixed-Use Tower in Dallas TX, and Riverpoint Office Tower in Chicago IL. He is registered as a Landscape Architect in the state of California.



CLAUDIA THOME
Director of Operations, Houston, TX

Claudia joined OJB in 2005 and has been invaluable to firm-wide operations ever since. In addition to filling the role of Director of Operations in our Houston office, she handles OJB's accounting and human relations tasks as well. Claudia has been an instrumental part of the management team as the firm has grown from 20 professionals to 45 over the past decade.

FIRM LEADERSHIP



DILLON DIERS, ASLA
Vice President, Solana Beach, CA

Dillon is a Vice President passionate and devoted to the design of timeless sustainable gardens and landscape. A graduate of California State Polytechnic University at Pomona, his knowledge and admiration for plants and construction methods has been an integral role within the firm. He is most active as the Project Manager for the Arboleda Mixed-Use development in Monterrey, Mexico, and the Horton Plaza Renovation in downtown San Diego. Dillon was the project director on Sunnylands Center and Gardens, one of the most significant project for the firm. Dillon is leading Toyota's new North American Headquarters in Plano, TX.



ANDREW ALBERS, AIA
Vice President, Houston, TX

Andrew Albers, Vice President, is a licensed Architect and has been with the Office of James Burnett in Houston, Texas since 2006. His work includes landscapes in the academic, healthcare, corporate, and public realms. Andrew has worked on some of the firm's most notable projects, including the Brochstein Pavilion, Central Quad, and Brockman Hall for Physics at Rice University; Enterprise Plaza in Downtown Houston, Texas; as well as several private corporate campuses. Educated as an Architect, Andrew's work has always looked beyond the building and sought a connection between interior and exterior. His passion for materials and detailing is present in all aspects of his design work, and he enjoys the investigation and documentation of how the landscape goes together. Outside of work, Andrew enjoys teaching an introduction to Landscape Architecture at the Rice School of Architecture.



CODY KLEIN, ASLA
Vice President, Boston, MA

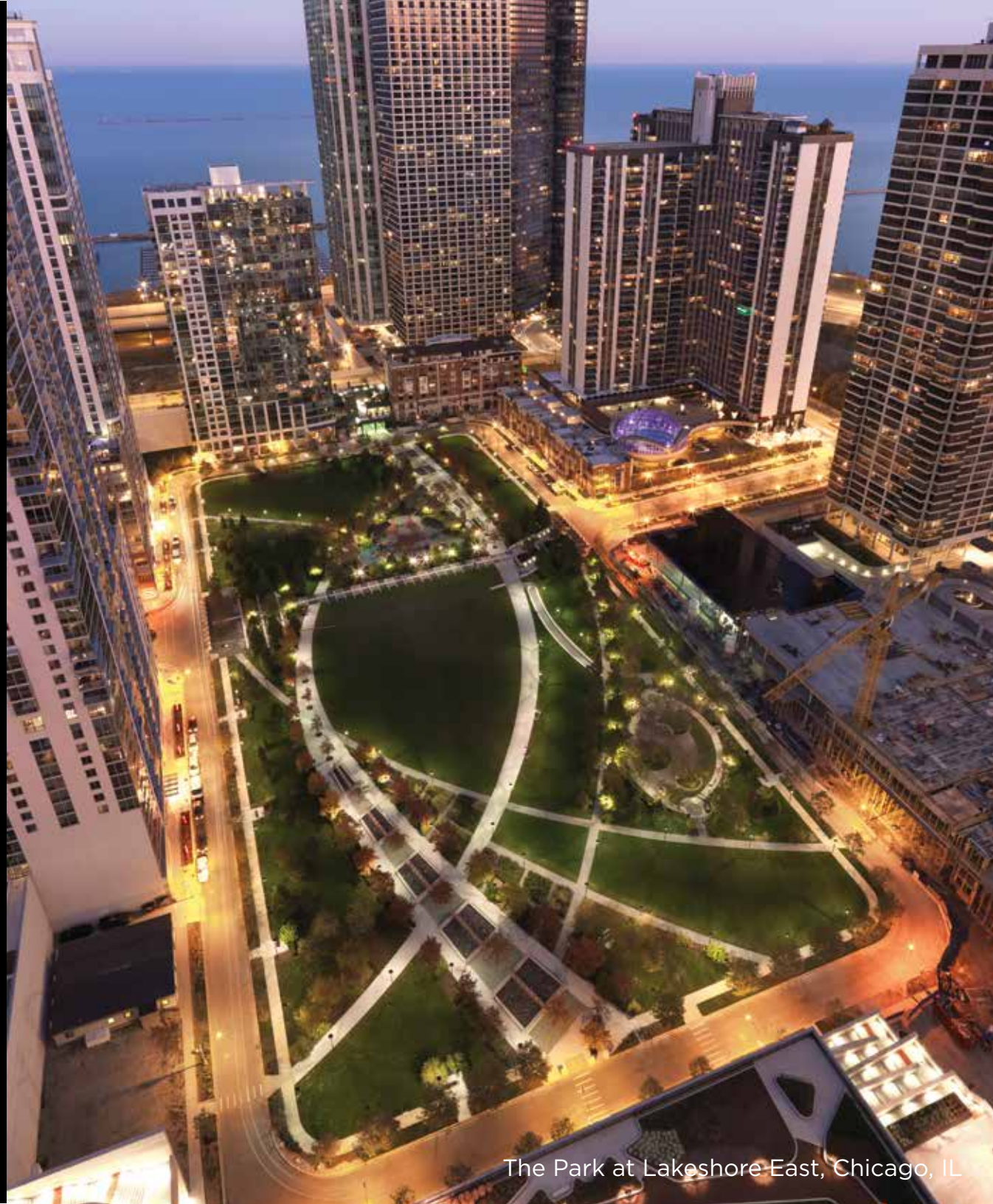
Cody has provided design and technical support for a wide variety of domestic and international projects. In November 2013, he relocated from our OJB Solana Beach office to Boston to oversee the operations of our new East Coast office. He is currently the Project Director for the Partners HealthCare Administrative Campus project in Somerville, MA - a corporate campus including 1.2 million square feet of office space and 11 acres of site improvements, gardens on structure and amenities. Cody is also managing and overseeing the design and construction of The Christ Hospital in Cincinnati and the Roche Diagnostics Learning and Development Center in Indianapolis.



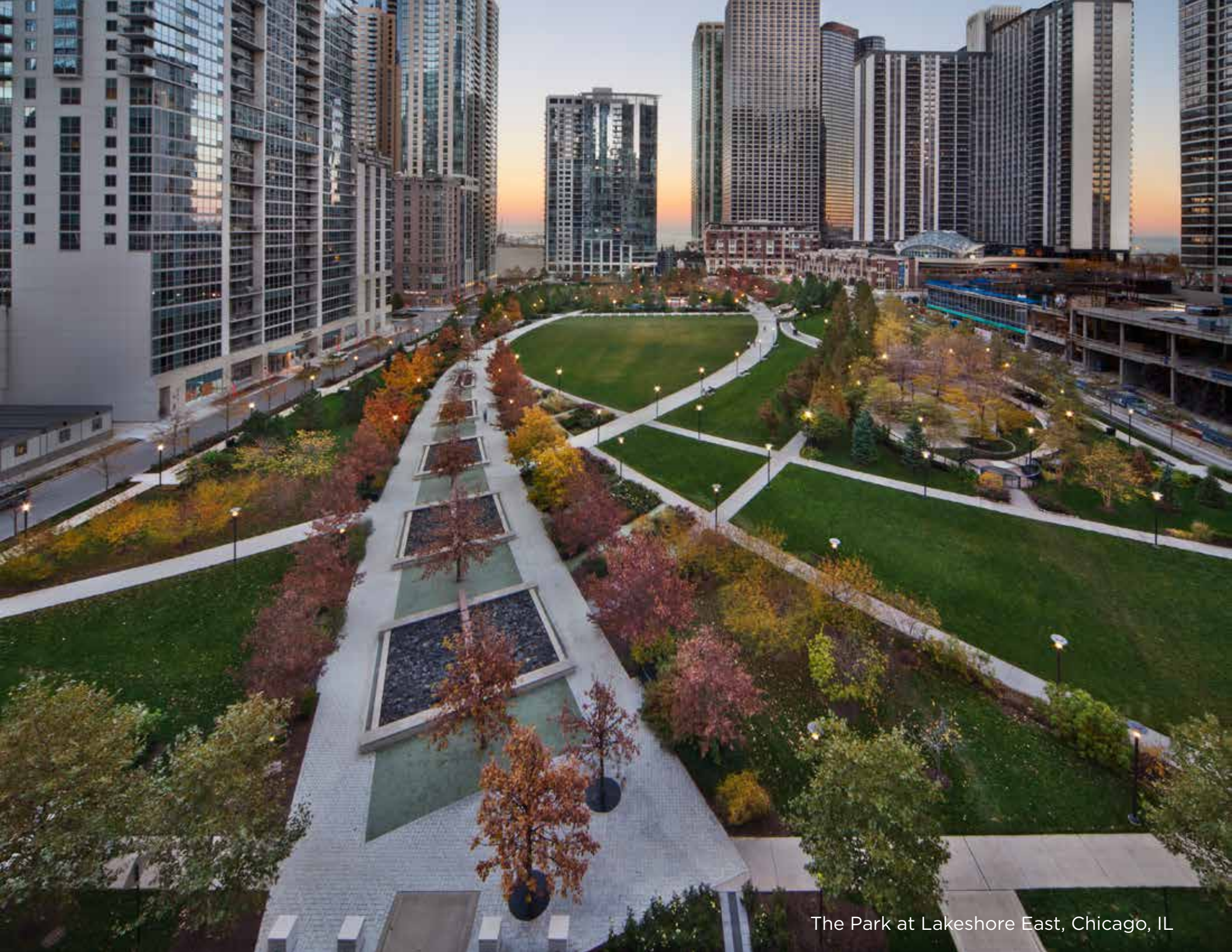
Sunnylands Center & Gardens, Rancho Mirage, CA



Sunnylands Center & Gardens, Rancho Mirage, CA



The Park at Lakeshore East, Chicago, IL



The Park at Lakeshore East, Chicago, IL



Playa Vista Central Park, Los Angeles, CA



Brochstein Pavilion, Rice University, Houston, TX



Klyde Warren Park, Dallas, TX



Klyde Warren Park, Dallas, TX



Omega at the Crossings, Austin, TX



La Jolla Commons, La Jolla, CA