



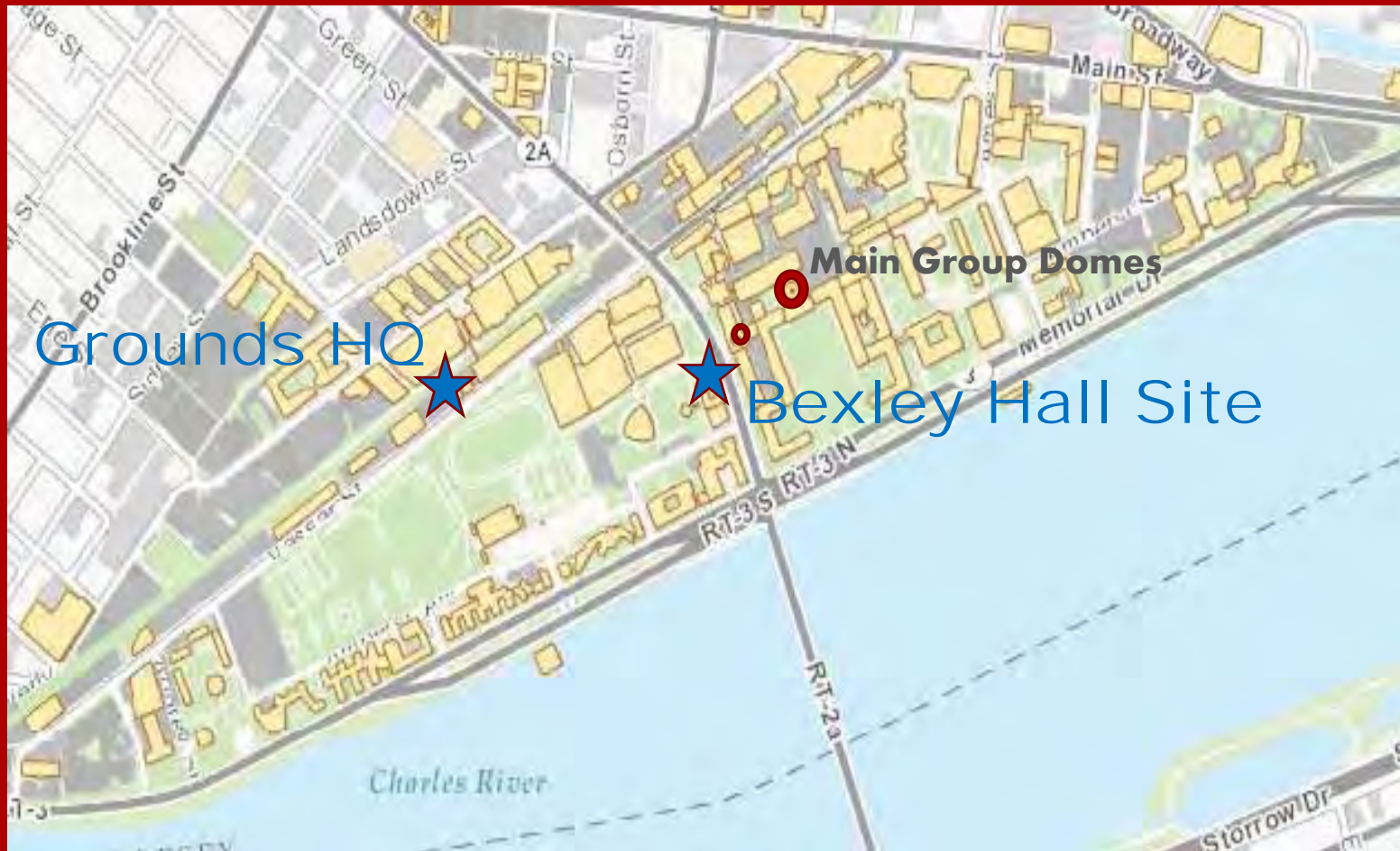
# Interim Landscapes

ASLA Campus Planning PPN

November 2015

Chicago, IL

Laura Tenny, ASLA



## Interim Project Sites 2012 – 2015

MIT West Campus, bounded by Vassar Street and Mass Ave. Corridors



## Established Landscapes & Buildings – Historic

c. 1916 – Main Group buildings and c. 1938 Killian Court – Setting for MIT Commencement



## Established Landscapes & Buildings – Contemporary

c. 2000s – Stata Center, Simmons Hall Dormitory, Koch Childare Center, Koch Cancer Institute



Grounds Crew HQ

## Grounds HQ Site Context

Future re-development site with ample FAR on Vassar Street corridor. Ten-year plan for Grounds. MIT neighbors: Simmons Hall dorm, Koch childcare center, athletic center, stadium, and fields

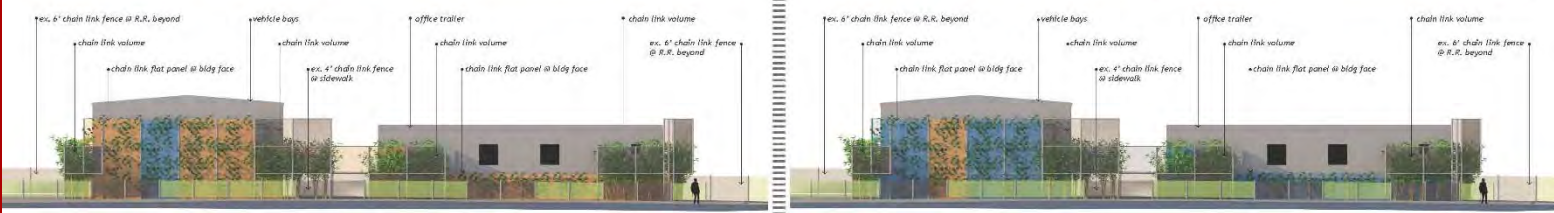
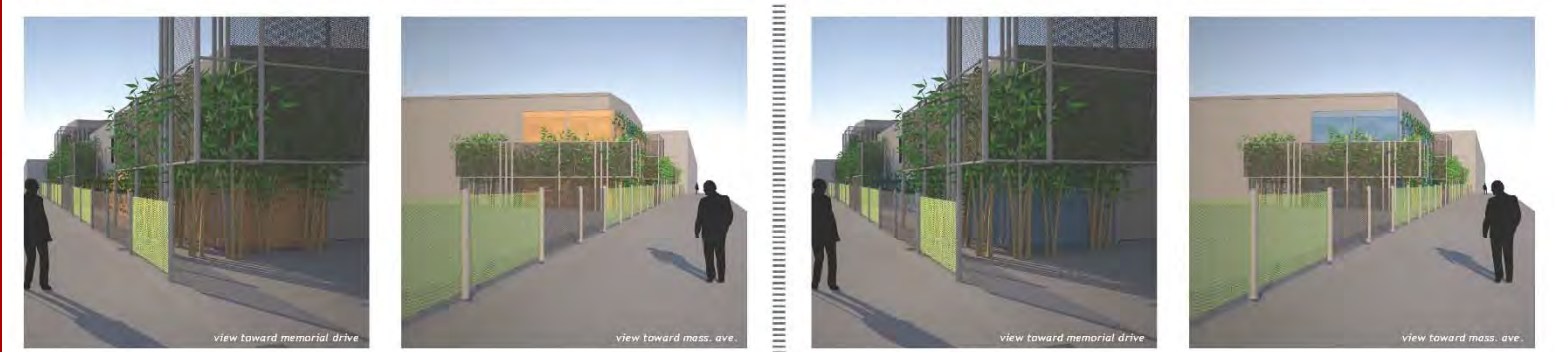


**Cycle track & ped path**

**Trailers here**

# “Before” conditions on Vassar Street

Site to receive trailers for offices and vehicle maintenance, leaving space for paved yard



MIT West Annex Lot Temporary Landscape  
 Precedents & Color Options | 06.25.12 | not to scale



# Concept

Taking cues from Simmons Hall & athletic fields. Colored chain link; fast-growing bamboo & vines -- Klopfer Martin Design Group Landscape Architects



## Construction

Strip adjacent to Vassar sidewalk excavated for narrow planting bed





# Construction

Trailers installed for Grounds Crew offices and vehicle repair bays



## Construction

Fence panels and boxes being assembled



## Post-Construction

Bringing bloom and color to the Vassar Street edge



Bexley Hall

## Bexley Hall Site Context

Mass Ave corridor lined with mature oaks; gateway to Main Group campus core



TUESDAY, OCTOBER 7, 2014 THE TECH 15

## ‘Open space’ to replace Bexley after demolition

### Student art gallery, central food truck stop among possibilities for interim use of space

**Bexley, from Page 1**

submitted on schedule in December.

Shehata and Rene L. Miller '15, another undergraduate on the committee, described their vision for the interim use of the space. "The plan is for it to be more of an open space," said Miller. According to Miller, some ideas that the committee has discussed include movable, modular furniture, an open space for student art installations, a small stage for movies and music, and space for food trucks.

"It will be like a general park," added Shehata. "There is also discussion about keeping the Bexley archway at the front of the space."

"The committee is the main driving force behind what it's going to look like," said Shehata. To create a visualization of their ideas, an architecture firm will make sketches based on the committee's input.

In an email to *The Tech*, UA president Shruti Sharma '15 said, "The Undergraduate Association is heavily working with the administration on campus planning, to ensure student perspective is incorporated in major decisions." She said, "Laila's 2030 committee has assiduously garnered feedback for the Bexley space and we look to keep getting more opinions."

Bexley closed due to structural problems in June 2013, displacing 116 undergraduates. The Department of Facilities and the Division of Student Life put forth a recommendation to demolish Bexley in October 2013, which awaited the approval of both the Building Committee and the Executive Committee of the MIT Corporation until this past spring.

To accommodate this loss of housing, Bexley residents were dispersed among several other dorms. Chancellor Barnhart noted that "staff from Residential Life and Dining worked with individual house governments to identify additional spaces within certain houses to accept an increase in residents, and MIT reduced the freshman class size by sixty."

Barnhart added, "New housing will be an element of the West Campus Planning Study which will include faculty and student representatives." The committee for interim use will not be part of the long-term plan for the use of the site. Whether or not the Bexley site will be used to build another dorm is yet to be determined.

---

**MIT CENTER FOR INTERNATIONAL STUDIES**  
[web.mit.edu/cis](http://web.mit.edu/cis) | [starrforum@mit.edu](mailto:starrforum@mit.edu)  
**STARR FORUM**

## Whither US Grand Strategy?

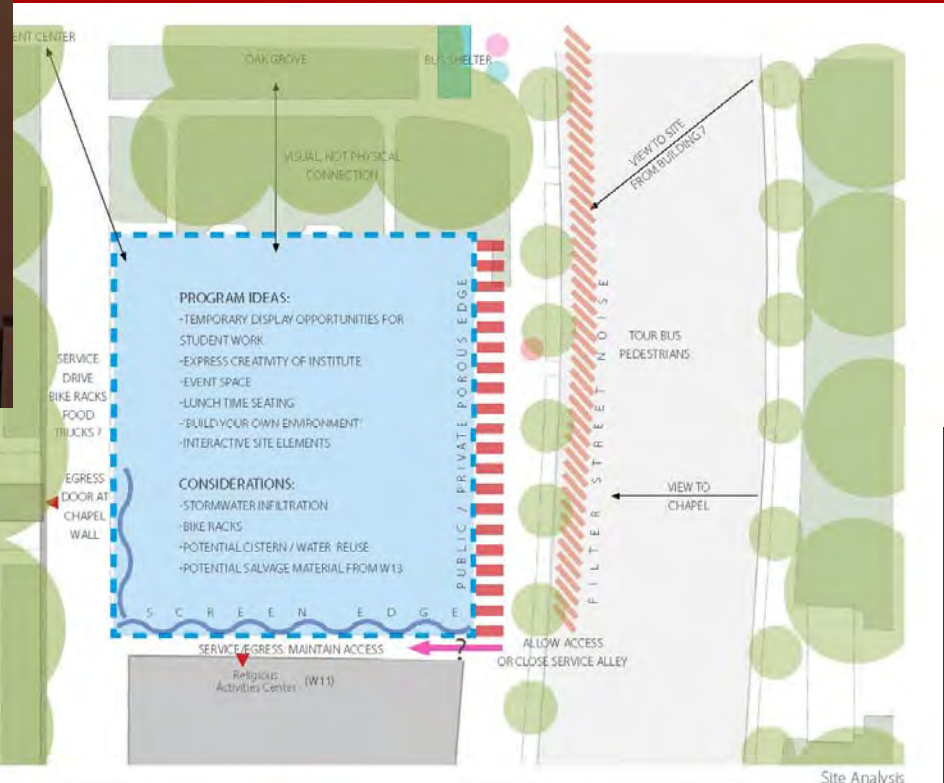
Featuring MIT's Barry Posen & Frank Gavin & Harvard's Steve Walt

**Thurs, Oct 9 | 4:30 PM - 6:00 PM**  
 E25-111 | 45 Carleton St, Cambridge  
[http://web.mit.edu/cis/eventposter\\_10092014.html](http://web.mit.edu/cis/eventposter_10092014.html)

This CSAIL SEMINAR SERIES, organized in cooperation with the Siri team at Apple, invites leading researchers in HLT to give lectures that introduce the fundamentals of spoken language systems, assess the current state of the art, outline challenges, and speculate on how they can be met.

Before Demo, View from 77 Mass Ave.

Bexley Hall scaffolded; awaiting demolition. Article in "The Tech" student newspaper



## Site Analysis & Program Priorities

Developed with students, faculty, and staff members of Working Group over 4 Workshops  
 IDEA: Place for temp display/installations at a gateway to MIT



## Concepts

Foundation walls to be retained and partially re-used, raising grade above sidewalk.  
Exterior elements salvaged. Gate lintel to be re-purposed as a bench.



Amherst Street/  
Undergraduate Dorms

Religious Activities  
Center

Temporary Landscape -  
Concept 1

Oak Grove  
Bus Stop/Seating Area

Path to  
Parking/  
Athletic Fields

Stratton Building  
Student Center



“Before” and “After” Renderings  
Workshop graphics re-imagine the view from across Mass Ave.



Opening in 2015



 **Massachusetts  
Institute of  
Technology**

LANDSCAPE ARCHITECT:  
  
LANDSCAPE ARCHITECTURE  
www.studio2112.com

STRUCTURAL ENGINEER:  
CELEBRATING 50 YEARS  


CIVIL ENGINEER:  
  
Nitsch Engineering

GENERAL CONTRACTOR:  
  
SHAWMUT  
Design and Construction

## Concept Rendering

Bike racks, desire line paths, hang-out space

-- Studio 2112 Landscape Architects



# Construction 1

Bexley gate lintel being sited as a bench



## Construction 2

Poplar trees and rain gardens



## **Common Themes of MIT Interim Landscapes:**

- **No canopy trees – they look too “permanent”**
- **Plant fast-growing species that stand out from their surroundings**
- **Choose common materials: chain link, raw concrete, asphalt**
- **Re-use building elements to recall former site**
- **Urban sites require export/import of soils to create plant beds**
- **Have some fun with it!**

## **Conclusion**

Common themes from two MIT interim landscape projects