

WILA WALK

Women in Landscape Architecture Walk

Friday, October 10, 2025
12:00 - 1:30 pm

Led by:



smm Emily Bullock
Principal

DANA BROWN & Associates Dana Nunez Brown
Principal

This 2.5-mile (+/-) walk will include stops at:

- 1 Calliope Corridor Green Infrastructure
- 2 Convention Center Linear Park
- 3 Caesars Hotel
- 4 Four Seasons Hotel & Residences
- 5 Spanish Plaza
- 6 Canal Street Ferry Terminal
- 7 Woldenberg Park

ASLA 2025
Beyond BOUNDARIES

Attractions 
Conference Hotels 



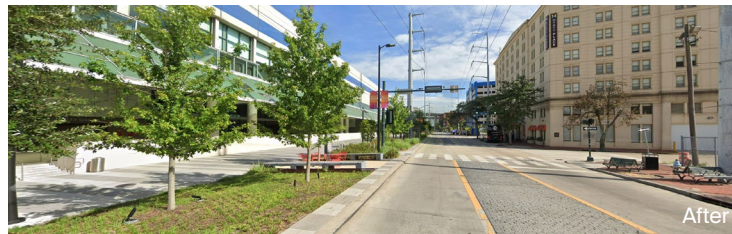
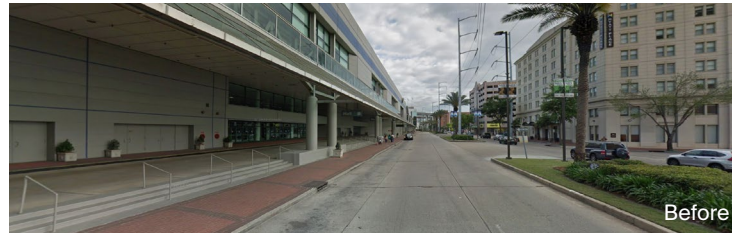
1 CALLIOPE CORRIDOR GREEN INFRASTRUCTURE

To improve the underutilized Calliope Street corridor under the Pontchartrain Expressway, DBA designed detention basins and plantings beneath the elevated highway. Three basins were strategically located to capture and detain stormwater runoff from the elevated highway, access ramps, and adjacent surface roads. The detention basins were planted with native plant species and have a stormwater storage capacity of over 55,000 cubic feet, or about 415,000 gallons. The introduction of native plants not only softens the starkness of the expressway's pillars and hardscape but also redefines the urban experience beneath the Pontchartrain Expressway. The integration of native species fosters new wildlife habitats. Native plant species include bald cypress trees, hibiscus, coneflowers, iris, muhly grass, dwarf palmetto, and sweetspices.



2 CONVENTION CENTER LINEAR PARK

A strategic road diet reduced four lanes of traffic to two lanes and used the reclaimed street right-of-way to create both a 'front porch' for the Convention Center and a vibrant, community park with a series of flexible spaces that accommodate a wide range of programmatic activities. SMM's mile-long Linear Park connects hotels and attractions from the French Quarter and CBD to the Convention Center with plenty of seating and shade trees, and stormwater management features. The project contributed to the Convention Center's LEED Gold certification for Operations and Maintenance.



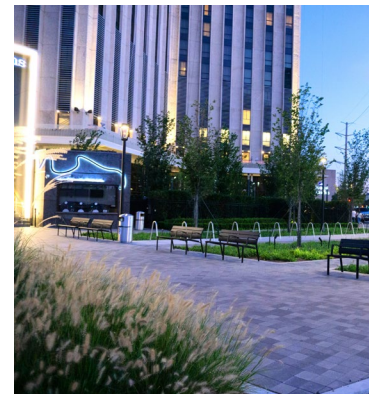
3 CAESARS HOTEL

DBA was commissioned to revitalize the exterior entry plazas and ground-floor planting in coordination with the planned transformation of Harrah's Casino into the rebranded and renovated Caesar's Casino and Hotel in New Orleans. DBA's redesign included new pavement patterns, site furnishings, and revamped planting schemes on the corners of Canal Street, Poydras Street, and Convention Center Boulevard. New stairways are set back from the building's entrances to create a larger and more inviting porch-like plaza for entering and exiting the casino. DBA designed the new planters, stairs, and ramp retaining walls to match the existing alignment and to address special design considerations atop the existing basement and roadway tunnel. The cohesive planting scheme extends to the new terraces which will provide casino patrons access to the outdoors. The iconic palm trees were removed from site during the demolition, stored, protected, and repositioned in the new plaza layout to align with the new paving patterns.



4 FOUR SEASONS HOTEL & RESIDENCES

The New Orleans World Trade Center, the first world trade organization in the world, was housed in the former International Trade Mart building. Constructed in 1967 at the foot of Canal Street and Poydras Street, the building was designed by Edward Durell Stone and is now on the National Register of Historic Places. The building was repurposed and renovated into the Four Seasons Hotel, with a new five-story building wrapping around the tower's base. As the project landscape architect, Dana Brown & Associates (DBA) designed a series of rooftop gardens and a pool deck for the new building, as well as a second-floor terrace which is the entrance to the museum Vue Orleans. On the ground plane, DBA designed a dining court, event lawn with adjacent garden spaces, and the motor court.



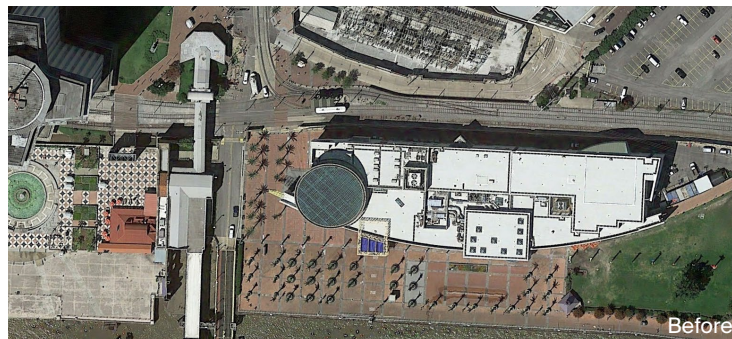
5 SPANISH PLAZA

DBA redesigned the 71,000 SF Spanish Plaza into a contemporary space, strengthening the New Orleans riverfront as a destination. The nation of Spain dedicated the original fountain tiles for the site in 1976 in remembrance of the common historical past and as a pledge of ongoing fraternity with New Orleans. Located outside the flood wall on the river side of the Four Seasons Hotel, the plaza was once a shipping wharf supported. Renovating the space required DBA to work within specific weight restrictions. The \$7.4 million renovation now provides spaces for larger concerts and festivals, a larger fountain that incorporates the historic Spanish tiles, tree planters, lighting, and a signature paving pattern. The pattern pays homage to the city's Spanish roots by using pavers to form a unique pattern inspired by the chamfered blocks found in Barcelona. The fountain incorporates arching sprays along the perimeter as well as a 3,000 square foot grid of 15-foot-high jets. These elements, along with dynamic LED lights, perform a show that creates a true public attraction.



6 CANAL STREET FERRY TERMINAL

The re-imagined Ferry Terminal is a vibrant focal point at the foot of Canal Street connecting Spanish Plaza with Woldenberg Park and inviting visitors to the riverfront. Addressing unique challenges on both the congested "dry side" and weight-restricted "wet side," SMM's redesign creates habitat for butterflies and other pollinators and brings much needed trees and shade to this area.



7 WOLDENBERG PARK

Woldenberg Park was designed by Cashio, Cochran, Torre / Design Consortium for the 1984 World's Fair, transforming industrial docks into a riverfront park. SMM is working with Audubon Nature Institute to redefine the future of the park. Phase I created an accessible and colorful entry sequence to the newly renovated Aquarium. Phase II, connects the Aquarium with the Ferry Terminal while tackling urban heat with large shade trees, lush plantings, a raised lawn, and monumental steps for watching the passing boats.



Master Plan