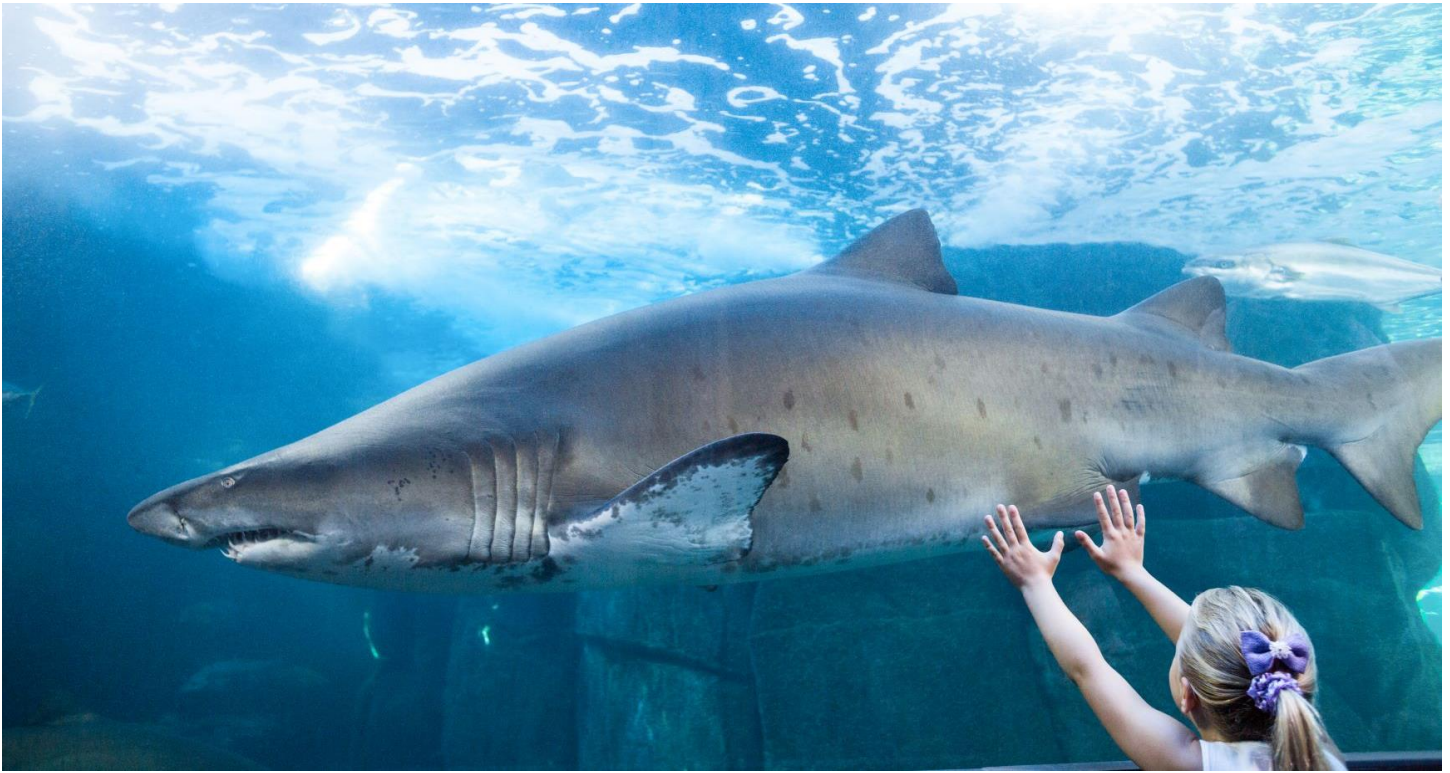


ASLA Career Discovery and Diversity

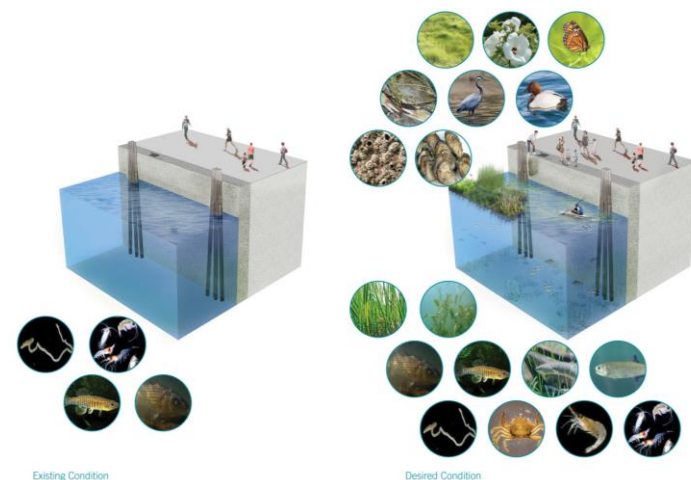
Landscape Sharkitecture: Jaw-Dropping Aquariums Designed by Landscape Architects



Each year, shark fans work themselves into a frenzy during Shark Week and Shark Fest. ASLA Career Discovery invites you to discover how landscape architects open up the underwater world, with an in-depth look at these jaw-dropping aquariums designed by our members.

Landscape Architects Take a Bite Out of the Design Profession

Landscape architects play an important role in designing aquariums around the world. Here are a few examples of ways landscape architects, including ASLA members, are building one-of-a-kind aquariums and aquatic gardenscapes.



National Aquarium in Baltimore, Maryland

[Urban Aquatic Health: Integrating New Technologies and Resiliency into Floating Wetlands, Baltimore; Client: National Aquarium, 2018 ASLA Professional Honor Award, Research](#)

The National Aquarium in Baltimore, Maryland, sits on a typical postindustrial urban waterfront. Its unique position as a global actor and habitat expert makes it well positioned to be an agent of change for urban water quality. With an ultimate goal of transforming its campus into a living lab, the aquarium teamed with designers, engineers, and researchers to investigate new technologies to produce a sustainable and high-performing floating wetland.

Image credit: ASLA 2019 Professional Honor Award. Urban Aquatic Health: Integrating New Technologies and Resiliency into Floating Wetlands, Baltimore, MD. Ayers, Saint Gross. Design Team.

Ocean Wonders: Sharks!

[Ocean Wonders: Sharks! at New York Aquarium, Coney Island](#)

Firm: [MIG | Portico](#); [Margie Ruddick](#)

Marking a comeback after the devastation of Hurricane Sandy, the New York Aquarium triumphantly opened its newest exhibit in the summer of 2018. This state-of-the-art exhibit features sharks from around the world with a focus on the wildlife that inhabits the waters near New York City. With its location on the beach at Coney Island, and its work to practice conservation locally, the New York Aquarium has an interesting role connecting people to wildlife.



Image credit: New York Aquarium.



Phillip and Patricia Frost Museum of Science

Firm: [ArquitectonicaGEO](#)

In collaboration with Grimshaw Architects, ArquitectonicaGEO was hired as the landscape architect for the Frost Science Museum site. The museum and its adjacent sculpture park occupy a 2.5-acre site on Biscayne Bay in Miami, Florida. Construction began in 2013 and was completed in the summer of 2017.

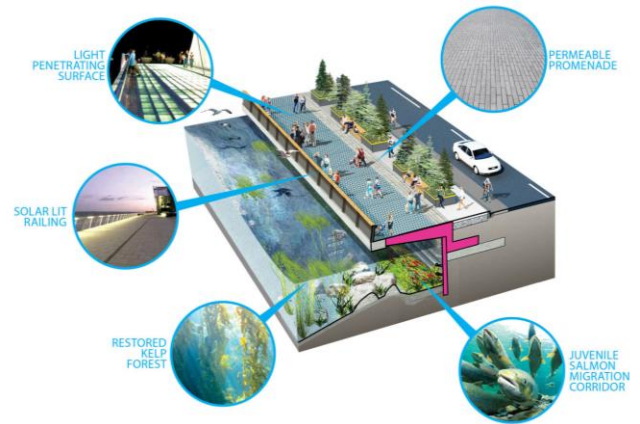
Image credit: Phillip and Patricia Frost Museum of Science.

Seattle Central Seawall Project

[Central Seawall Project 2017 ASLA PROFESSIONAL AWARDS](#)

Seattle's Central Seawall Project replaced 3,700 linear feet of derelict seawall with a new state-of-the-art, seismic-resistant seawall that is seamlessly integrated with an unprecedented salmon migration corridor, an enhanced tidal marine environment, and an updated pedestrian promenade. The Central Seawall Project is a massive urban infrastructure project that addresses current issues of sea-level rise, ecology, and aquatic habitat rehabilitation while in the center of a large port city.

Image credit: ASLA 2017 Professional General Design Honor Award. Central Seawall Project, Seattle, WA. James Corner Field Operations LLC / image: James Corner Field Operations



Steinhart Aquarium

[California Academy of Sciences, San Francisco Steinhart Aquarium, 2009 ASLA Professional Honor Award, General Design](#)

Since 1923, the Steinhart Aquarium has developed a colorful history of firsts. From becoming the first public aquarium to display flashlight fish and coconut octopuses to advancing exploration of the ocean's mysterious "twilight zone," innovation and scientific excellence are in our DNA. Today, Steinhart Aquarium continues to shape the role that modern aquariums play in educating and inspiring the public about the biodiversity and sustainability of our oceans and rain forests

Image credit: Steinhart Aquarium, a photo from California, West | TrekEarth



Other Interesting Finds

- Becker, Carol, "[What's in a Nativar?](#)" *Landscape Architecture Magazine*, July 2019 (specifically the aquarium's Migratory Bird Garden)
- Lee, Lydia, "[Wet Bars](#)," *Landscape Architecture Magazine*, April 2017; 2011 ASLA-NCC Excellence Award for Planning, 2015 ASLA-NCC Merit Award for General Design
- [Oyster-tecture](#), Oyster-tecture envisions an active oyster reef that diversifies aqueous marine life and recreational potential in the New York Harbor. Firm: SCAPE/[Kate Orff](#), ASLA.

Just for Fun

- [Discovery Channel Shark Week 2020](#)
- [National Geographic Sharkfest 2020](#)
- [Seeing is Believing: An Affectionate Shark](#) For the first time, affectionate behavior in a shark has been documented.
- [The Incredible Art of Underwater Landscaping for Aquariums](#)

If you're looking for more exciting resources to introduce landscape architecture, check out [ASLA's Career Discovery web page!](#)

Connect with ASLA Career Discovery and Diversity on Social Media

- The next time you volunteer at an aquarium, share your photos on ASLA Twitter @NationalASLA and tag #ASLACareerDiscovery.
- Join the growing community of ASLA members and chapters showing their commitment to diversity and inclusion with [#iPledgeASLADiversity](#).

If you need additional information, email Lisa J. Jennings, Manager, Career Discovery and Diversity at discover@asla.org.

