



Green Infrastructure & Stormwater Management CASE STUDY

Newark Street Dog Park

Location: Washington, DC

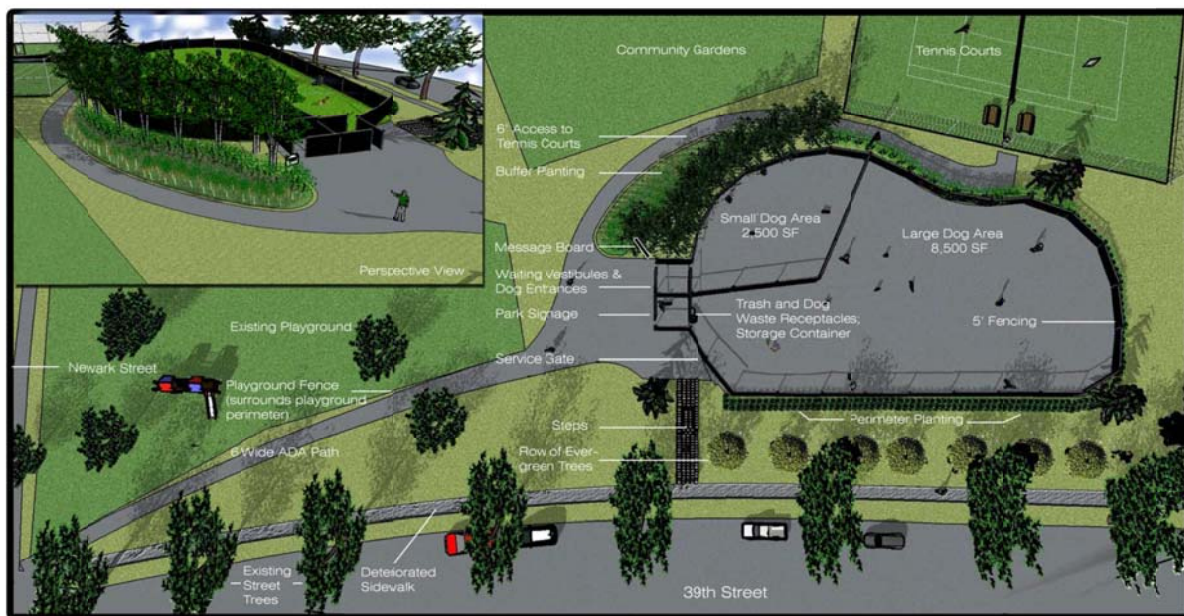
Client: Office of Public Education Facilities Modernization/ Department of Parks and Recreation

Design Firm(s): Toole Design Group, LLC

Landscape architect/Project contact: Daniel Biggs, RLA, ASLA

Email: dbiggs@tooledesign.com

ASLA Chapter: Potomac



Newark Street Dog Park
39th and Newark Street, NW
February, 2010

Newark Street Dog Park
Conceptual Design
Department of Parks and Recreation



Project Specifications

Project Description: The project consisted of an approximately 10,000 sq/ft dog park in an existing open grass area in the southwest corner of Newark Street Park. The dog park included two dog runs (big dog and small dog), lighting, benches, shelter, landscaping, bioswale, rain garden and access path connections to the adjacent streets. The dog park site is surrounded by an existing tennis court, community gardens, playground, and an adjacent hill side along

39th Street. The design/build project was completed in approximately 4 months from the start of design to final punch-list closeout.

Project Type:

Open space - park

A retrofit of an existing property

Design features: Rain garden, bioswale, and a porous pavement (stone dust) was used over and asphalt surfaced trail/ walkway.

This project was designed to meet the following specific requirements or mandates:

Local ordinance, developer/client preference

Impervious area managed: less than 5,000 sq/ft

Amount of existing green space/open space conserved or preserved for managing stormwater on site: less than 5,000 sq/ft

The regulatory environment and regulator was supportive of the project.

Did the client request that other factors be considered, such as energy savings, usable green space, or property value enhancements? It was a priority of the project to preserve and protect the existing park facilities adjacent to the proposed dog park.

Cost & Jobs Analysis

Estimated Cost of Stormwater Project: >\$10,000 (Public funding: State, local)

Was a green vs. grey cost analysis performed? No

Cost impact of conserving green/open space for stormwater management over traditional site design/site development approaches (grey infrastructure)? Did not influence costs.

Number of jobs created: 3

Job hours devoted to project:

Planning and Design: 150

Construction: 400

Annual Maintenance: 50

Performance Measures

Stormwater reduction performance analysis:

The stormwater facilities are expected to retain the 2 and 5-year storms.

Community & economic benefits that have resulted from the project: As a community asset, the dog park has provided a facility to a new interest group among the local residents. Prior to construction of the dog park, dog enthusiasts could only walk their dogs on leashes in the neighborhood or drive to other dog parks in the District.

Additional Information

Links to images: <http://www.newarkstreetdogpark.org/index.html>

<http://dpr.dc.gov/DC/DPR/Property+Improvements/Capital+Projects/Capital+Improvement+Projects/Newark+Street+Dog+Park>