



United States Department of the Interior

NATIONAL PARK SERVICE
George Washington Memorial Parkway
c/o Turkey Run Park
McLean, Virginia 22101

January 20, 2021

ASLA Medal Nominations
c/o Honors and Awards
636 Eye Street, NW
Washington, DC 20001-3736

RE: ASLA MEDAL – DARWINA L. NEAL, FASLA, HM. IFLA, F. US/ICOMOS

Dear Executive Committee Members and Board of Trustees:

It is my honor to nominate Darwina L. Neal, FASLA for the ASLA Medal in recognition of her lifetime achievements and lasting impact to our profession. Darwina has dedicated her career to promoting landscape architecture through her advocacy and stewardship as a public servant with the National Park Service and in her volunteer service for various local, national, and international groups. She has been at the forefront of promoting and being a leader for women in the profession; initiating the recognition and documentation of historic landscapes; promoting and overseeing the design legacy of the Lady Bird Johnson's Beautification Program; and inspiring public service for the profession.

Darwina and I crossed paths many times over the years, but our first meeting was in an elevator at the 1984 ASLA convention in Phoenix, Arizona. She was just completing her one-year tenure of being the first woman ASLA president. At the time, I had no idea the significance of this meeting. I was a freshman in college in the landscape architecture program at Colorado State University and was introduced to her by my father, who was also a landscape architect. Darwina was gracious during this first meeting. Many years later, I would be working for Darwina when I, too, joined the National Park Service. As my mentor, Darwina provided counsel, oversight, support, and friendship. Her professional reputation, strong beliefs, and character enabled her to take on difficult issues and develop viable solutions. She is known for her attention to detail, her "red pen" mark-ups, and her fostering of friendships. She taught me that it is important to reach out and be proactive for things you believe in.

BACKGROUND

Darwina L. Neal received her Bachelor of Science degree in Landscape Architecture from Pennsylvania State University and did post-graduate studies in Urban Design at Catholic University. She was hired by the National Park Service in 1965, after she interned there one

summer. She ended up spending her entire professional career, forty-four years, with the National Park Service and retired in 2009.

Her career started first on the Lady Bird Johnson's Beautification Program task force in Washington, DC (1966-1969); then at the White House Liaison office working on projects at Camp David and the White House grounds (1969-1972); followed by working in the Office of Professional Services, where she served as a Landscape Architect and eventually the Chief of Design Services (1972-1996); and finally with the Office of Lands, Planning, and Design, where she served as the Chief of Cultural Resources (1996-2009). With the various roles in the National Park Service, National Capital Region, she managed, reviewed, advised on, and designed a wide range of parks, monuments, and memorials throughout the Washington Metropolitan Area. At the same time, Darwina was dedicated to ASLA and the local ASLA chapter. She became a full member of ASLA in 1972 and served in many roles in the Potomac Chapter. Her involvement was elevated to the national level as Treasurer (1977-1979), Vice President (1979-1981), and then President of ASLA (1983-1984). Darwina became an ASLA Fellow in 1982.

I cannot underscore her role in local and international historical, preservation, and landscape conservation groups. She served in various leadership roles with two international organizations. The first, the U.S. National Committee of the International Council on Monuments and Sites (US/ICOMOS), is a professional association that works for the conservation and protection of cultural heritage places around the world. Darwina held several positions with US/ICOMOS: Board of Trustees (1985-1998), Treasurer (1998-2004), Trustee (2004-2007 and 2011-2017), and Cultural Landscape Committee (2005-2019). She was designated a US/ICOMOS Fellow in 2007. The second, International Federation of Landscape Architects (IFLA), promotes the landscape architecture profession within a collaborative partnership of the allied built-environment professions, demanding the highest standards of education, training, research and professional practice, and providing leadership and stewardship in all matters. For IFLA, Darwina served in the following roles: Cultural Landscape Committee (2005-2019); Western Region Secretary (2003-2006); and Americas Region Vice President (2006-2010).

While serving internationally, Darwina was and continues to be an active participant in activism in the United States and in Washington, DC, for the following groups: National Association for Olmsted Parks; The Garden Conservancy; Southern Garden History Society; Alliance for Historic Preservation; Preservation Action; Historical Society of Washington; Committee of 100 for the Federal City of Washington, DC; and the DC Preservation League.

PROMOTED WOMEN AS LANDSCAPE ARCHITECTS

Darwina did not just sit back and wait for the world to change, she made an impact to open the profession to more woman. When she started with the National Park Service in 1965, she was only the third woman landscape architect to work for the agency. In 1972 she was appointed chair of a task force to investigate the status of both women and Blacks in the profession. The results showed that only 5% of ASLA members were women and no women were teaching full time in landscape architecture programs. This task force report resulted in ASLA adopting policies to equalize women in the profession, including requiring the use of non-specific gender

references in all ASLA publications and policies; requiring only equal opportunity job listings; and promoting landscape architecture as a profession to women.

As the first woman ASLA President in 1983, Darwina is a role model for women in the profession, carrying this leadership role throughout her career and into retirement. Women in Landscape Architecture Professional Practice Network serves as a reminder of how far we have come in the profession since Darwina first chaired the task force over fifty years ago. Based on the latest survey in 2017, women ASLA membership has increased to over 35% and most accredited schools have at least one woman on their faculty. Although it cannot be attributed directly to her, Darwina surely influenced the shift to advocate for women in the profession.

FOREFRONT IN THE HISTORIC LANDSCAPE PRESERVATION MOVEMENT

In 1977 Darwina presented a paper on “Restoration of Park Landscapes” before the panel on Public Space Planning and Landscaping at the DC Historical Studies Conference. Whether this was a pivotal moment in Darwina’s professional career is unclear, but around the same time, the first guidelines on historic landscape preservation were developed for State Historic Preservation Officers. By 1981 the term “cultural landscape” had been codified by the National Park Service and then by 1987 the first guidance published for nominating designed landscapes to the National Register.

In her role as Chief of Design Services, Darwina directed two initiatives to recognize and document significant historic landscapes in Washington, DC. The first was the Historic American Building Survey of Meridian Hill Park (1985-1987), a 1916-1936 neoclassical American park designed by landscape architects George Burnap and Horace Peaslee, followed with the designation of the Meridian Hill Park as a National Historic Landmark in 1994. This turned out to be one of the first nationally designated historic landscapes to be listed as a landmark (a significant distinction). Soon to follow was the Historic American Building Survey of Dumbarton Oaks Park (1989-1994), a “wilderness landscape” designed by landscape architect Beatrix Farrand between 1921-1940 and adapted for public use between 1940-1951.

Darwina’s pivotal role in the development of these landscape designations is not well known or recognized. It represents her dedication to elevate the resources and promote their importance and to chart the course for many subsequent studies. In the two cultural landscape treatment documents, she is finally given recognition by the authors in their acknowledgements. An affirmation of her involvement continues with sponsorship of the National Building Museum, Cultural Landscape Fund Lecture series. The inaugural lecture in 2017, appropriately featured Beatrix Farrand, the only woman among the 11 founding members of ASLA. I was fortunate to participate in this lecture, highlighting the successes and challenges of managing Dumbarton Oaks Park as a National Park Service property.

DESIGN LEGACY OF LADY BIRD JOHNSON’S BEAUTIFICATION PROGRAM

At the beginning of Darwina’s career, she had the benefit of working on the task force to implement the Lady Bird Johnson Beautification Program initiative for the Washington Metropolitan area (1966-1969). She worked directly with the First Lady’s staff and White House Liaison office to implement and showcase Washington, DC as the pilot city to show the nation how beautification could enhance the overall quality of life. The prominence of Washington, DC garnered national visibility to highlight the progress of the effort.

Darwina played the landscape architect’s role of taking the ideas of the Beautification Program and implementing them at various pocket parks, circles, and squares throughout the city and at the ceremonial entrances to Washington, DC. Where this legacy is still evident today is at the Tulip Library (Floral Library) south of the Washington Monument, and the thousands of daffodils that are showcased in various areas throughout city, but are most noted on Columbia Island (redesignated Lady Bird Johnson Park in 1968) and along Rock Creek and Potomac Parkway. At the 2016 Philadelphia Flower Show, which was dedicated to the 100-year anniversary of the National Park Service, the Tulip Library was recreated to commemorate this annual display south of the Washington Monument. At the show, Darwina was acknowledged as the landscape architect for the Tulip Library.

INSPIRING PUBLIC SERVICE

Even though Darwina may have retired from public service, she continues to be an advocate for the protection of significant historic landscapes. Her local activism includes: the preservation and protection of key characteristics from Pershing Park designed by Paul Friedberg and Oehme Van Sweden and site of the new National World War I Memorial; continuing protection of Meridian Hill Park designed by George Burnap and Horace Peaslee from ongoing incompatible development; and lastly the protection of the Smithsonian’s Enid Haupt Garden designed by Lester Collins and Sasaki Associates from total destruction for the development of the South Mall Campus Master Plan.

CONCLUSION

As stated in her 2016 speech, when Darwina received the Lifetime Achievement Award by the ASLA Potomac Chapter.

“I believe in ‘giving back’... and passing on... that fostering connections, mentoring, and nurturing friendships are important in whatever you do... male or female... and have tried to do that in all my professional work and organizations... National and International.”

Darwina has shown us how to apply this philosophy in all the activities she has been involved in during her 44 years of public service working for the National Park Service and continuing

advocacy for the profession. I propose that the committee acknowledge her accomplishments and bestow Darwina L. Neal, FASLA with this most prestigious award, the ASLA Medal.

Sincerely,

Maureen D. Joseph

Maureen D. Joseph, ASLA
Chief of Resource Management
George Washington Memorial Parkway
National Park Service



Darwina Neal, FALSA
1608-D Beekman Place NW
Washington, DC 20009
Work: 202-258-1662
Home: 202-265-4021
Darwina_neal@verizon.net

Retired



23 January 2021

ASLA Medal Nominations
636 Eye Street
Washington DC 20001- 3736

To the ASLA Executive Committee,

It is with great pleasure that I provide this enthusiastic letter of support for Darwina L. Neal, FASLA, HM IFLA, Fellow US/ICOMOS, for consideration of the ASLA Medal. Darwina's professional achievements, over a fruitful career and into an active retirement are diverse and important, making her an excellent candidate for this lifetime achievement recognition.

My initial contact with Darwina dates to 1984, the year she rose to the ASLA presidency, the first woman to hold that important role. With her support, that year I launched a national inventory of cultural landscapes, as chair of ASLA Historic Preservation Committee. She has served in numerous national and chapter positions, receiving, for example, the Potomac Chapter Lifetime Achievement Award in 2016.

Darwina was a professional role model, for me, and many other woman professionals, as she displayed visionary leadership for our profession through ASLA, and rose through the National Park Service, to Chief, Cultural Resource Preservation Services, of the National Capital Region, until her retirement in 2009. Her active mentorship of dozens of young professionals marks a persons that constantly brings emerging professionals forward as evidence of her commitment to ASLA, landscape architecture and heritage.

In recent years, our Heritage Landscapes office projects have uncovered evidence of some of her early works, finding her beautiful hand sketched 1968 planting plans during cultural landscape work at the Frederick Douglass National Historic Site in Anacostia. This was just three years into her service with the NPS (1965) and early in the transfer of the site to the NPS in 1962. In addition to the significance of Douglass, it is meaningful that Neal contributed to the stewardship of a site important in preservation history for the leadership of women and African Americans. We also located her 1980s landscape rehabilitation drawings for the DC WWI Memorial rehabilitation that captured the intent to improve the site while preserving its original design. Works on the White House and Camp David landscapes and design and construction oversight for the Lyndon Baines Johnson Memorial Grove, rank as important contributions to our national cultural landscape heritage.

Heritage Landscapes LLC

Preservation Planners & Landscape Architects

www.heritagelandscapes.com

501 Lake Road Charlotte, VT 05445 802.425.4330 34 Wall Street Norwalk, CT 06850 203.852.9966

Darwina Neal, FASLA, Recommendation ASLA Medal, Page 2

I am also aware of the important contributions Darwina has made beyond ASLA through volunteer professional service in national and international organizations. For the International Federation of Landscape Architects (IFLA), she served as the ASLA World Council representative, as Vice President, Americas Region, chaired the IFLA Sir Geoffrey Jellicoe Award Nominations Committee (2012-16), and as a member of the IFLA Cultural Landscapes Committee. IFLA made her an Honorary Member in 2016 in recognition of her long-standing contributions.

For International Council on Monuments and Sites, the cultural heritage advisor to UNESCO World Heritage, Neal has engaged for more than 30 years. Serving as board member and officer to US/ICOMOS and an active member for the US/ICOMOS International Exchange Program, she has constantly advanced our national work for World Heritage and helped enlarge the heritage community. Darwina's contributions to the ICOMOS IFLA International Scientific Committee on Cultural Landscapes (ISCCL), for which I currently serve as president, began some two decades ago. Over these years as an expert member, she has provided World Heritage nomination desk reviews, contributed to new guidance documents on historic urban parks, rural landscape and World Heritage nominations reviews. She supports the work of the ISCCL, to this day, through engaging in working group exchanges and editing English language documents.

Neal has traveled extensively throughout North America, Europe, Asia, Central and South American, and Pacific Rim countries actively contributing to local, national, and international professional conferences, seminars and tours. In these forums, she generously offers her expertise to the dialogue to move our profession forward.

A further example of her enduring influence is her founding and continuing support of an annual lecture on the preservation of cultural landscapes at the National Building Museum, she seeks to raise awareness and enhance learning about the importance of cultural landscapes heritage assets.

Through the decades Darwina reaches out and engages with her chosen profession as an outstanding landscape architect, historic preservation professional and above all a welcoming guide and collaborator. I recommend Darwina L. Neal for the signal honor of being awarded the ASLA Medal in 2021.

With thanks for your consideration of this nomination,



Patricia M. O'Donnell, PLA, FASLA, AICP, F. US/ICOMOS

Founder, Heritage Landscapes LLC

President, ICOMOS IFLA International Scientific Committee on Cultural Landscapes



United States Department of the Interior

NATIONAL PARK SERVICE
Olmsted Center for Landscape Preservation
15 State Street
Boston, Massachusetts 02109

IN REPLY REFER TO:

January 24, 2021

ASLA Medal Nominations
c/o Honors and Awards
636 Eye Street, NW
Washington, DC 20001-3736

RE: ASLA MEDAL – DARWINA L. NEAL, FASLA, IFLA, F. US/ICOMOS

Dear Executive Committee Members and Board of Trustees:

I write to support with great enthusiasm the nomination of Darwina Neal to be awarded the ASLA Medal. Darwina has dedicated her career to advancing the role of landscape architecture in shaping the built environment. She has been a pivotal figure in expanding the position of women in the profession and defining the role of the profession in historic preservation nationally and internationally. In addition, Darwina has demonstrated the power of advocacy to make positive and lasting change as collaborators and leaders.

I became aware of Darwina's leadership in the profession while studying landscape architecture at the State University of New York, College of Environmental Science and Forestry, in Syracuse when she became the first women ASLA president in 1983. I recall the excitement of this milestone in the profession's history and learning that it was during a meeting in Syracuse that Darwina, and several other women practitioners, launched the idea for an initiative to increase the role of women in the profession. During my career with the National Park Service, I observed firsthand how Darwina served as a role model for women in the agency. Today, the number of women practicing and teaching has significantly increased, and the Women in Landscape Architecture Professional Practice Network continues to advance this work.

I met Darwina soon after joining the National Park Service in 1990. As a young landscape architect starting a new position in the agency's headquarters' office, I observed her leadership as a skilled practitioner, manager and advocate for quality design and historic preservation. My career with the agency has focused on cultural landscape preservation at both national and regional levels. I began working with Darwina when the field of landscape preservation was just emerging. In her position as Chief of Design Services, she oversaw numerous preservation projects throughout the National Capital area, involving some of the nation's most significant designed landscapes. In addition, Darwina played a critical role in developing national policy and guidelines for managing cultural landscapes in the national park system, consistently demonstrating the importance of landscape architects in the stewardship of our nation's landscape heritage.

Darwina is a tireless advocate for landscape architecture, especially in the conservation and protection of our cultural heritage. In addition to her impressive work with ASLA, she dedicates her time to support numerous national and international landscape conservation groups. She has served in various support roles with these groups, traveling throughout the world and committing untold hours promoting the profession. Of particular note, is her leadership roles with the International Federation of Landscape Architects (IFLA) and U.S. National Committee of the International Council on Monuments and Sites (US/ICOMOS). In recognition of her outstanding

contributions, Darwina was designated a US/ICOMOS Fellow in 2007. Her contributions and advocacy advanced our understanding of the meaning and value of landscape preservation in the lives of people across the globe.

Darwina's achievements and contributions to the profession throughout her forty-four year career of public service with the National Park Service, and her tireless advocacy for the role of landscape architecture in shaping and stewarding our environment, clearly have had a unique and lasting impact on our national and international communities. I highly recommend Darwina L. Neal receive the ASLA Medal.

Sincerely,

A handwritten signature in black ink that reads "Robert R. Page". The script is fluid and cursive, with the first letters of each word being capitalized and prominent.

Robert R. Page, FASLA
Director, Olmsted Center for Landscape Preservation

Colombia, 24 January 2021

ASLA Medal Nominations
636 Eye Street
Washington DC 20001- 3736

RE: ASLA Medal – DARWINA NEAL, FASLA, HM. IFLA, F.US/ICOMOS

Dear ASLA Executive Committee,

It is a great honor to provide this wholehearted letter of support for Darwina L. Neal, FASLA, HM. IFLA, F.US/ICOMOS, for consideration of the ASLA Medal. Darwina's achievements, over a successful career are diverse and important, making her an outstanding candidate for this lifetime achievement recognition. I have been very much inspired by Darwina Neal, who embraced all values which global/regional organizations and Institutions should represent ethics, political sensitivity, professional excellence, landscape heritage, collaboration, and the collegiate nature of our profession.

My initial contact with Darwina dates to 1984, the year she rose to ASLA National President (1983-84), as the first woman elected to that position. We both became increasingly involved in IFLA, the International Federation of Landscape Architects. Darwina attend in September the 1984 IFLA World Council 22nd Congress in Siofok, Hungary, as the ASLA delegate. This was the place and time when we met as women global pioneers in the then male-dominated organizations of ASLA and IFLA.

What a pleasure to collaborate with Darwina Neal, not only as a colleague but as dear friend working together closely for more than three decades. We met many times in varied geographies throughout Latin America, North America, Europe, and Asian countries where Darwina participated on world councils, conferences, seminars, and symposiums. In these forums, she generously offered her knowledge to the dialogue to advance our shared profession. I offer below a description of Darwina's performance, track record, influence and successful results during those wonderful and creative days in IFLA in some detail.

INTERNATIONAL COOPERATION THOROUGH DARWIN NEAL'S ADVOCACY AND LEADERSHIP

ASLA Annual Meeting & EXPO and 43rd IFLA World Congress of 2006, Minneapolis, MN

Thanks to Darwina's strong advocacy, in 2006 my last year as president, we hosted the 43rd IFLA World Congress in the Fall of 2006, in conjunction with the ASLAs Annual Meeting & EXPO, making it the largest event in the world for landscape architects and related professionals, including more than 90 extraordinary education sessions, exciting study-tours, several session addressing landscape heritage, an informative Expo, and opportunities to connect with landscape architects from around the world. Darwina confirmed that making synergies and forging partnerships at the global level was strongly needed and reflected in the IFLA World Council agenda topics that year. The joint forum with ASLA, was the culmination of much innovative thought and planning, and enable constructive communication, co-operation, and collaboration at the international level in those days.

IFLA Publication – Past, Present, Future.

IFLA continues through 2010 with Darwina's contributions. The summary of IFLA's work in a book moved forward with the underlying concept of achieving advances through global teamwork. The ability to work together toward a common vision and direct individual accomplishment toward organizational objectives and teambuilding served as the guiding factor in ensuring optimum development, communication, and leadership for IFLA. Darwina Neal served as Editor-in-Chief, an essential role to permeate the two terms of Martha Fajardo presidency (2003-2006), Diana Menzies presidency (2006-2010), in this IFLA edition.

The UNESCO Vienna Memorandum and UNESCO Recommendation on the Historic Urban Landscape (HUL)

Her full life actively devoted to culture, heritage from professional, academic, institutional, and political perspectives, Darwina is a truly relevant voice in the elaboration of a global heritage discourse through the ICOMOS/IFLA Cultural Landscape Committee 2005 to 2010. She made important collaborative contributions to the IFLA Committee to international dialogue, with Hans Dorn from Germany, Darwina Neal, Patricia O'Donnell from USA, Hal Moggridge from England, Xiaoming Liu from China, that were fundamental to the 2005 Vienna Memorandum, the precursor to HUL.

The concept of HUL basically derives from the experiences of landscape architects, planners, architects, and heritage professionals around the world. First put on the table in September 2005. Over the next six years further expert work and the UNESCO member states reviews led to the adoption of the international soft-law recommendation in 2011. HUL is an approach, a methodology to interpret, to read, to see heritage as a part of a context, to analyse its layering, its process. It is a critical management tool to address urban heritage recognition, preservation and ongoing stewardship.

IFLA CONTRIBUTIONS TO IFLA POLICIES AND PROGRAMS

I am especially thankful for Darwina's able assistance in leadership and negotiation skills to address: the process and committee for the Sir Geoffrey Jellicoe Gold Medal Award; the IFLA and European Federation of Landscape Architects Coming Together; the Chinese Society of Landscape Architects (CHSLA) membership in IFLA; the IFLA moving dues/framework advance from the Svendborg agreement to a new framework; the International Union of Architects UIA/IFLA Memorandum of Understanding signed in October 2006 at the IFLA /ASLA event in Minneapolis. I would like to stress how amazed I was every time at the world councils we have arguments among the delegates; Darwina with her clear statements and sense of diplomacy shifted the atmosphere toward harmony, contentment, and understanding. Because of this and much more IFLA made her an Honorary Member since 2016.

Her help on the draft towards an IFLA Global Landscape Convention (GLC). Inspired by 2003/2005 workshops for the implementation of the European Landscape Convention, shaped a valuable tool for landscape architects, benefitting our profession world-wide. This document was presented at the 2005 World Council in Edinburgh and ratified at the 2006 World Council in Minneapolis. This foundation led to the beginning of the Latin American Landscape Initiative (LALI).

Darwina was IFLA AMERICAS vice-president from 2006-2010, helping to promote the landscape architecture profession, as well as the cultural landscape approach. Her period was a highly active time where diversity in the region encompasses North, Central and South America representing associations

from all over the region. What cultural landscapes and World Heritage Cultural Landscapes are, and that cities can be “historic urban landscapes”, using Rio de Janeiro as an example was her legacy

I greatly benefitted from the full support of Darwina in defining and advancing the IFLA Strategic Plan 2003-2006 as a new vision and mission, developing a communication and visibility, membership and growth, education, professional recognition, strengthening partnerships with other international organizations, management and the internal administration action plan.

During my term as IFLA President, she was appointed as the IFLA Sir Geoffrey Jellicoe Award Nominations Committee – The Medal was intended to be presented once every four years to the landscape architect whose lifetime achievements have had a lasting impact on the welfare of society and the environment and from 2012 to 2014 she served as chair, working on the call for nominations and their review each year.

Darwina Neal is a woman of passion, intelligence, and wonderful heart whose contributions to the practice and activism of landscape architecture have an impact world-wide. Therefore, I recommend Darwina L. Neal, FASLA, HM. IFLA, F.US/ICOMOS, for the honor of receiving the ASLA Medal in 2021.



Marta C. Fajardo

Landscape Architect Doctor of Letters (DLitt). University of Sheffield

CEO of Grupo Verde (GV)

Former President and Honorary Member of the International Federation of Landscape Architects (HM IFLA)

Cofounder and Chair of the Latin American Landscape Initiative (LALI)

Email: mfajardo@grupoverdeltda.com

Paul Dolinsky

Dear Executive Committee Members and Board of Trustees:

It is a pleasure and privilege to recommend Darwina Neal for the National ASLA Medal, the highest honor bestowed by the American Society of Landscape Architects.

I have known Darwina professionally and personally for almost 40 years and can think of no other landscape architect whose lifetime achievements and contributions to the profession that is more deserving of this honor.

We first crossed paths in the early 1980s during her tenure as a landscape architect with the National Capitol Regional Office of the National Park Service. At that point she was well respected for her many exceptional projects within the Washington, DC metropolitan area in general. In particular though, she was recognized for her understanding and interest in the preservation of historic landscapes. As such, she was selected to be part of a team of professionals in public practice, private practice and academia to determine the future of the National Park Service's role in managing, documenting, and preserving historic designed and vernacular landscapes. Her strong knowledge base and experience formed the basis for drafting the pilot projects to guide the National Park Service's leadership role in the preservation of historic landscape architecture.

Never satisfied with inaction, she took immediate action to support her words and recommendations by developing projects to test the recommendations. She worked closely with the Historic American Buildings Survey (HABS), the oldest Federal preservation program to add landscape documentation to their operations portfolio, moving historic landscape preservation to the mainstream. Additionally, she spearheaded the National Capitol Regional Office's funding of pilot projects for HABS to produce measured drawings, written history and large-format photography of this highly unrecognized historic resource. As a result, the iconic Meridian Hill Park project was realized in Washington, DC, not only to developed standards for how to document a formal landscape, but also to serve as the basis for its future conservation and preservation. The success of this project and the transparent need for such work resulted in Darwina Neal developing a multi-year program to comprehensively document the historic landscapes of the National Capitol Region for future maintenance, restoration and rehabilitation needs.

The long-term result of her vision and initiative is significant. As the former Chief of the Historic American Landscape Survey, I am grateful for Darwina's continuous support and lobbying for almost 20 years to establish the National Park Service's HALS program. In 2000 HALS became a permanent program through a tripartite agreement among the National Park Service, the Library of Congress, and the American Society of Landscape Architects.

Darwina Neal's resume is extensive with her leadership roles in many national and international organizations such as the ASLA as former President, the International Federation of Landscape Architects (IFLA) and the United States/International Council on Monuments and Sites (ICOMOS), to name just a few. Fundamentally, though, she is consummate landscape architect with great attention to accuracy and detail.

Paul Dolinsky

She continues in her retirement to be actively involved in these organizations and in particular, their support for young professionals. Through her leadership role at US/ICOMOPS she has arranged for dozens of young landscape architects from around the world in government and private sector offices for summer internships in the United States and abroad, and in doing so, built an immense international legacy for the profession.

On the humorous side, when she retired, her professionally colleagues presented her with a framed “red pen”, an item they knew all too well through her positive and critical reviews of their written documents. This refined sense of detail, whether in her landscape design or management work has always been cited as a hallmark of lasting influence and accomplishment.

On the personnel side, we share much in common such as our Alma Mater, Pennsylvania State University and routinely recall professors and adventures we similarly shared during our professional education. Recently, I had the pleasure of spending a lovely, full day with her at her home across from Meridian Hill Park in Washington, DC. Inevitably, we discussed our many projects and friends and the epitaph of Sir Christopher Wren, the famous British architect, came to my mind. “If you seek his monument, look around”. Although profoundly premature, how appropriate those words are regarding Darwina Neal.

Sincerely,

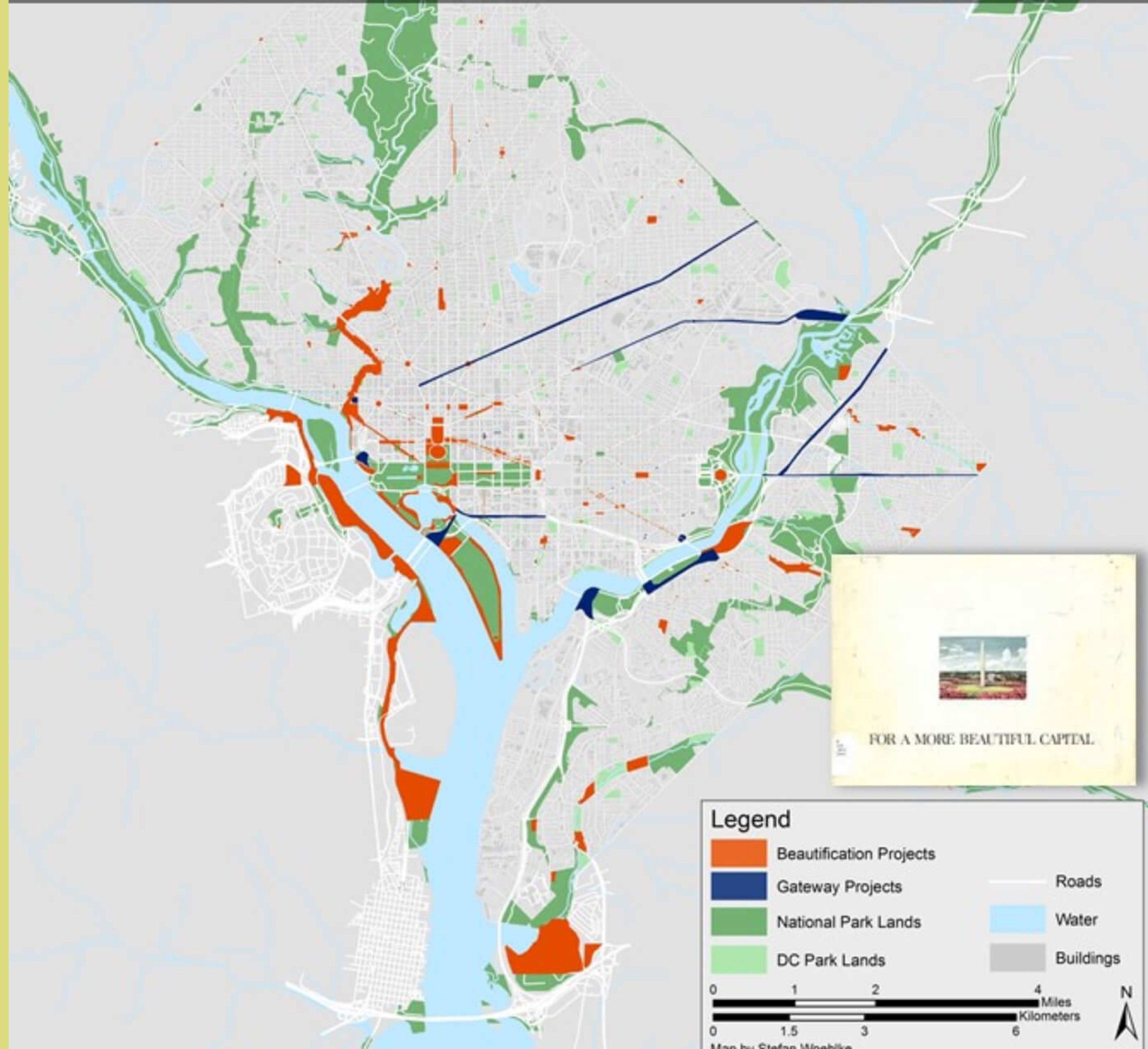
Paul Dolinsky
Former Chief of the Historic American Landscape Survey Program



Lady Bird Johnson – 75th Jubilee Birthday Celebration - 1987



Lady Bird Johnson's Beautification Program







Lady Bird Johnson Park





First Lady Michelle Obama at the Department of the Interior



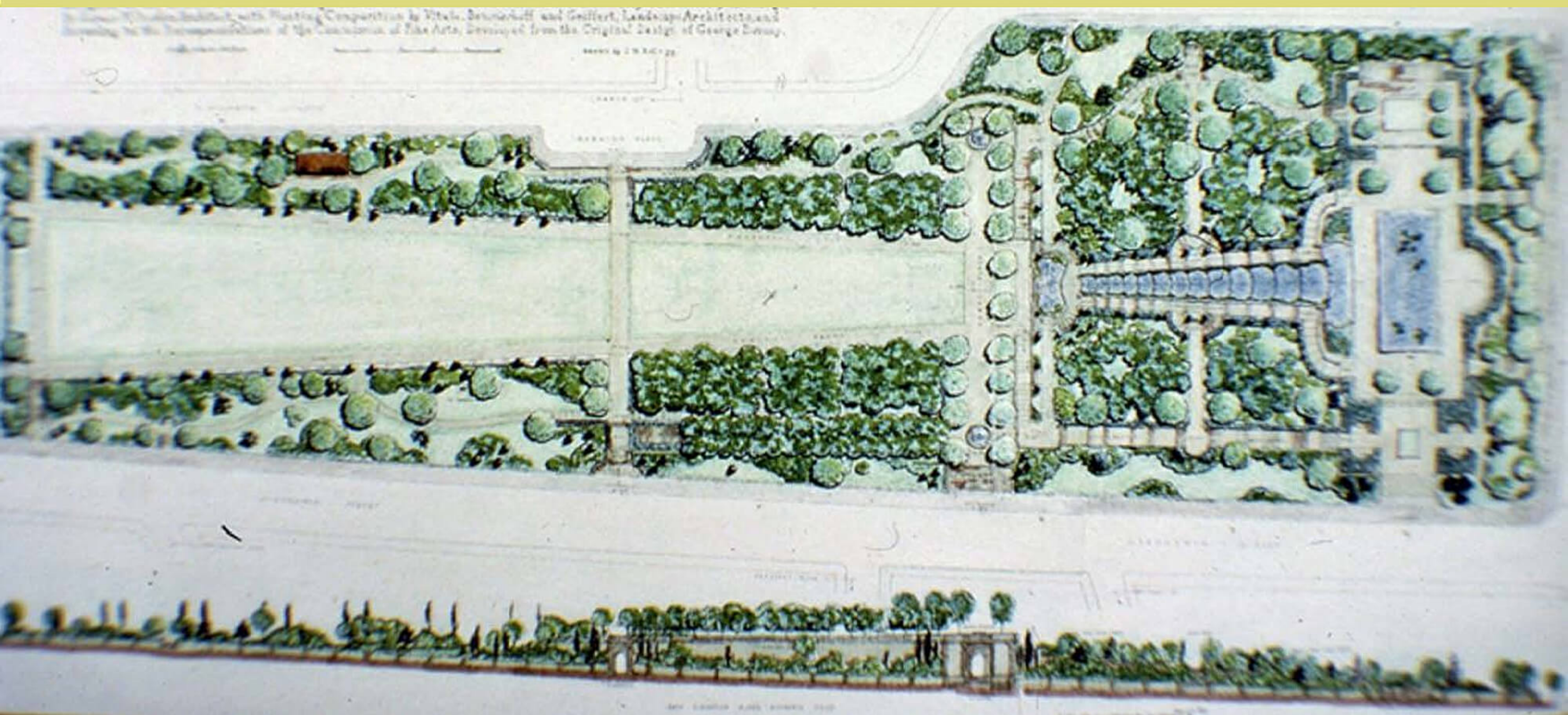
2005 IFLA World Council, Banff, Canada



IFLA Americas Region Council, Suzhou, China, May 2010



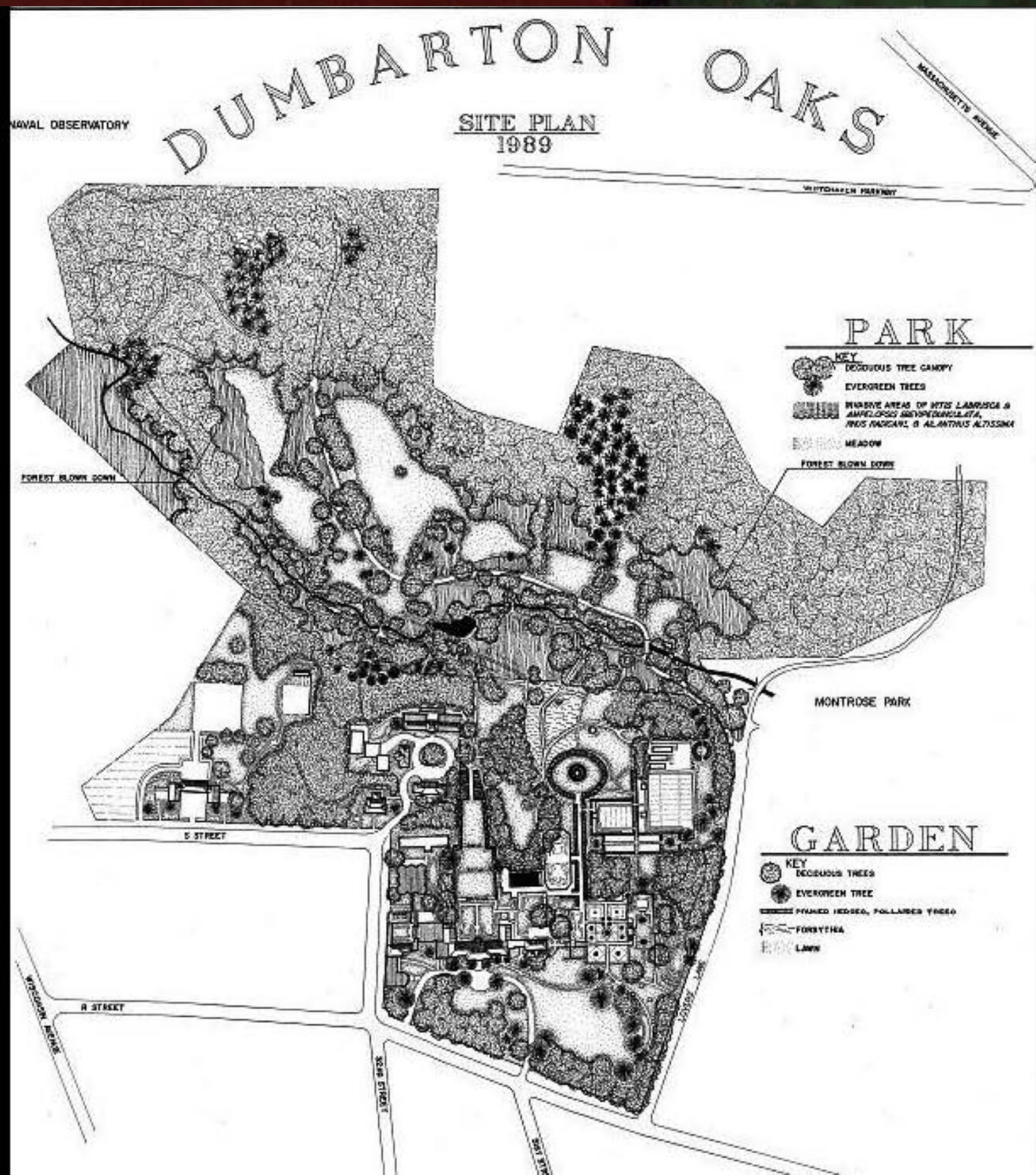
Restoration of Meridian Hill Park



Restoration of Meridian Hill Park



Dumbarton Oaks Park HABS Plan



ASLA President – 1984 in Phoenix





ASLA President – 1984 in Phoenix

