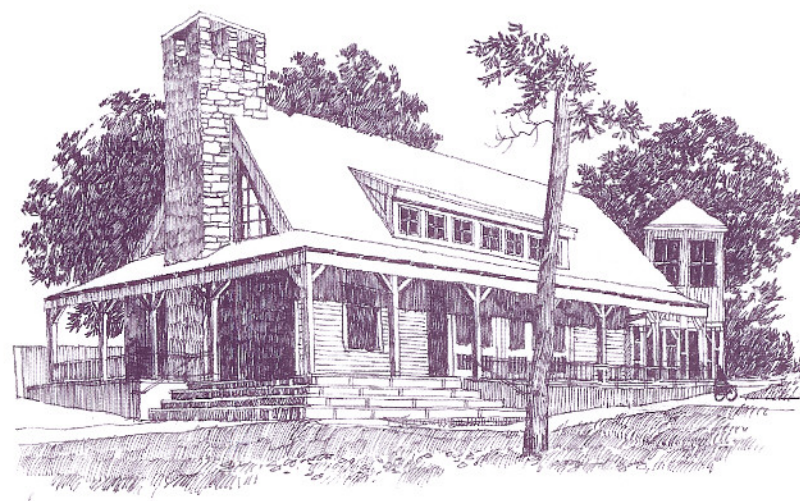
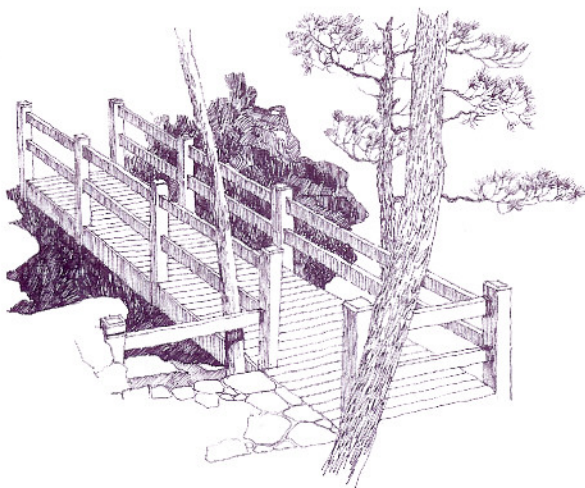


Particularly important are those elements that make buildings welcoming, durable, warm, and dry. Forest Service structures must provide access to lakes and other natural features without detracting from the setting. Initially, frontier people and settlers were attracted to the province's waterways and lakefronts for transportation and for their potential to produce lumber, host industry, and ship goods. Today's populations look to the water for recreation. When possible, orient buildings and structures in this province toward the water and elevate them for views and breezes.

Bridge characteristics:

- Finished materials
- Fine to moderate scale



Interpretive facility characteristics:

- Extended porch
- Vertical chimney accent
- Add high windows for additional daylighting



Maintenance/Storage facility characteristics:

- Hipped roofs
- Daylighting