

# CALL FOR ENTRIES

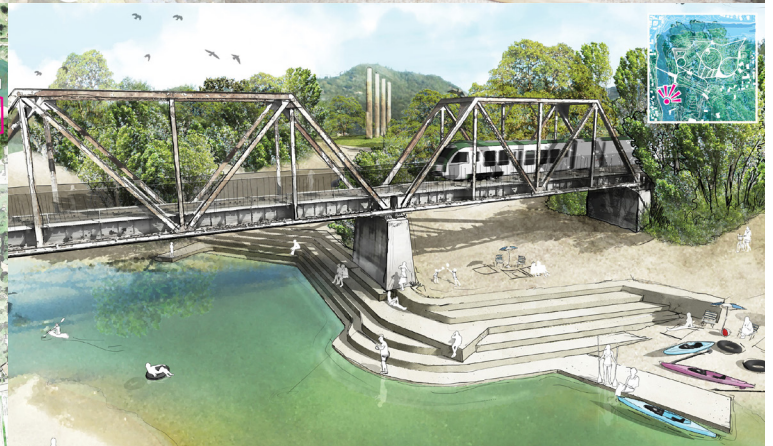
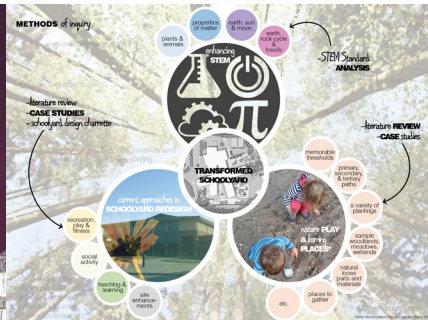
American Society of Landscape Architects 2017 Student Awards

**Your Best Is Our Future**

Enter the ASLA Student Awards Competition and Show Us What You Can Do!



**LANDSCAPE ARCHITECTURE MAGAZINE**  
THE MAGAZINE OF THE AMERICAN SOCIETY OF LANDSCAPE ARCHITECTS



## CATEGORIES:

General Design  
Residential Design  
Analysis & Planning  
Research  
Communications  
Student Collaboration  
Student Community Service

Entry payments and submissions are due by May 15, 2017.

## AWARDS PRESENTED:

Winning entries will be celebrated October 20-23, 2017, at the ASLA Annual Meeting and EXPO in Los Angeles.

**You could be there!**

For more info visit [www.asla.org/2017CFE](http://www.asla.org/2017CFE)

### IMAGE CREDITS:

2016 ASLA Student General Design Honor Award Recipient. Bendway Park. Eric Arneson, Student Affiliate ASLA, Academy of Art University. Faculty Advisors: Heather Clendenin, Affiliate ASLA; Toni Bava; Mary Scott. (Image credit: Eric Arneson)

2016 ASLA Student Communications Honor Award Recipient. Dan Kiley Landscapes in Bartholomew County, Indiana and Planting Typologies at the Miller Garden and North Christian Church. Zhen Tong, Student ASLA, The Pennsylvania State University. Faculty Advisors: Ron Henderson, FASLA; Maria Debije Counts. (Image credit: Stephanie Swindle)

2016 ASLA Student Research Honor Award Recipient. Flowers in Crannied Walls: An Elementary Schoolyard Redesign. Taylor Metz, Student ASLA, Ball State University. Faculty Advisor: Dave Ferguson, ASLA. (Image credit: Taylor Metz, Student ASLA)

2016 ASLA Student Collaboration Honor Award Recipient. Bridging Disciplines/Cultivating Health/A Community Design Model. University of Washington Team. Faculty Advisors: Daniel Winterbottom, FASLA; Iva Dika; Stanko Stergarsek; Luka Jelusic; Serna Krtak. (Image credit: Daniel Winterbottom, FASLA)